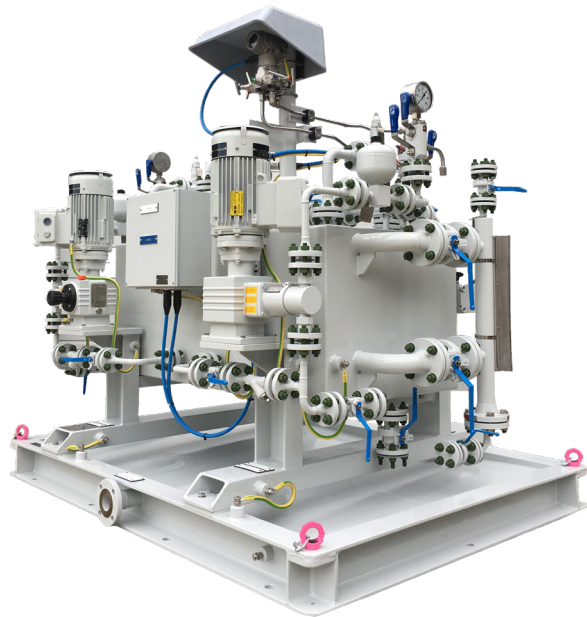




API 682 SEAL SUPPORT SYSTEM – ATUs

Amarinth System 5000 Automatic top-up units (ATUs) enable the automatic refilling or ‘topping up’ of barrier fluid in API 682 type seal support systems. A constant barrier fluid supply is maintained at the correct pressure, minimising maintenance and manual intervention. They meet or exceed stringent customer specifications and restrictive customer vendor lists for all instrumentation, valves and controls, and are fully ATEX and/or IECEx compliant. Standard documentation and testing packages can be tailored to meet your exact requirements.



General description	A range of ATUs manufactured and sized to meet specific barrier fluid pressure and volume requirements, supporting single and multiple frame systems
Construction	Functional modular construction allowing multiple configurations
Design methodology	Advanced computer techniques, 3D modelling & CFD
Design standards	Vendor standard based on DEP philosophy
Design pressure rating	125 barg max @ 100°C
Temperature rating	100°C
Performance envelope	
Operating Pressure	Up to 125 barg
Operating Volume	Up to 3500 litres
Configuration	Duty Duty/standby
Design life	30 years (3 years uninterrupted operation)

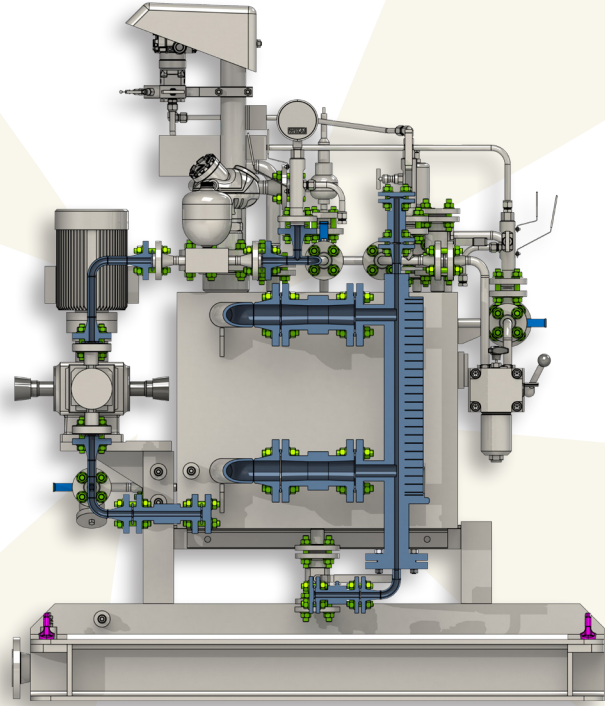
API 682 SEAL SUPPORT SYSTEM - ATUs

key features

- Optimised layout for restricted space
- Custom design
- Ease of maintenance
- Remote operation and auto start-up
- Plug and play designs

options

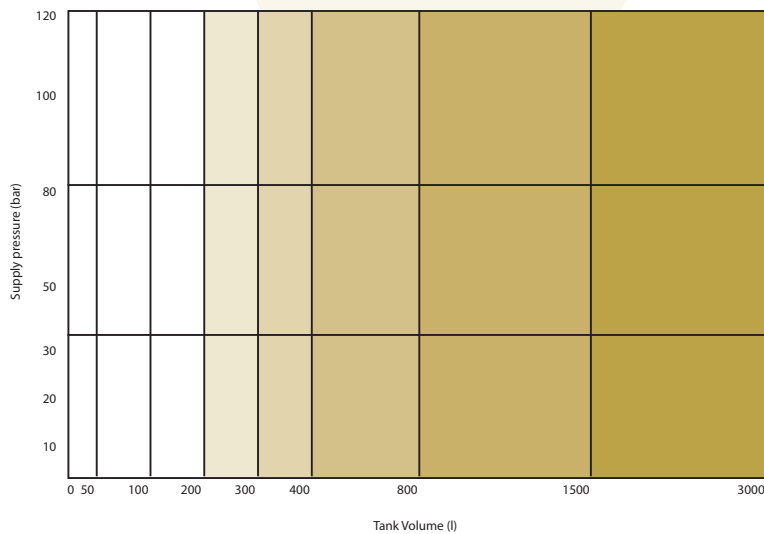
- Level transmitters
- Level gauges
- Pressure transmitters
- Pressure gauges
- Single/double pump feed
- Welded pipework
- Pressure regulating valves



materials

Frame	Tank	Pipework
Carbon steel	Carbon steel	Carbon steel
Carbon steel	SS 316L	SS 316L
SS 316L	SS 316L	SS 316L
Carbon steel	Inconel	Inconel
SS 316L	Inconel	Inconel
Customer specified	Other materials available including NACE compliant materials	Other materials available including NACE compliant materials

ATU coverage



typical applications

- Sour service
- Produced water
- Hydrocarbon
- De-salter
- Gas dehydration



Bentwaters Parks, Rendlesham, Woodbridge,
Suffolk IP12 2TW, United Kingdom
tel: +44 (0)1394 462 120
fax: +44 (0)1394 462 130
e-mail: enquiries@amarinth.com
web: www.amarith.com