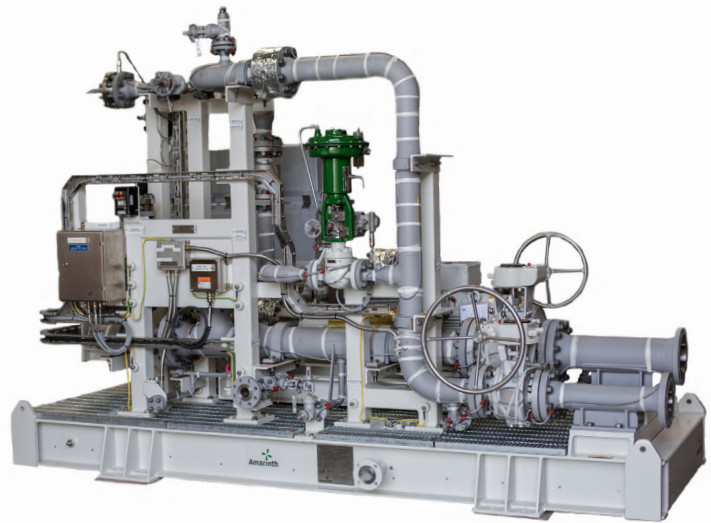




API 610 PROCESS PUMP SKID PACKAGES

Amarinth API 610 process pump skid packages for the Petrochemical, Chemical and Oil & Gas markets, are designed to minimise space, optimise performance and provide fully automated process control of up to five API 610 11th edition pumps. They are fully ATEX compliant. All API pump materials are available as standard, plus bespoke options including NACE compliant materials. Standard documentation, testing and NDT packs are offered to fit your exact requirements.

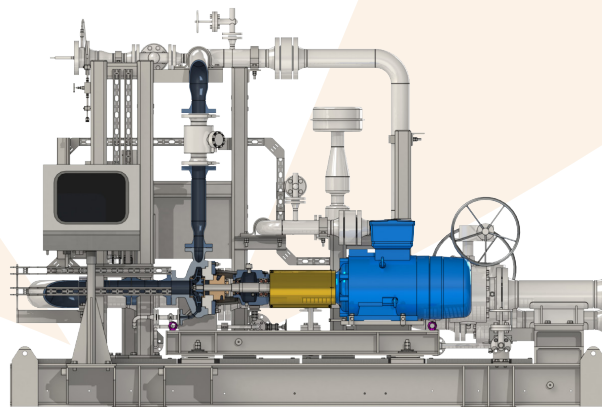


General description	Individually designed API 610 process pump skid packages incorporating up to five API 610 process pumps in a variety of alloys, complete with integrated pipework and fully automated process control where required
Construction	Weld fabricated frame and pipework with integrated API 610 pumps to suit
Design methodology	Advanced computer techniques, 3D modelling, CFD & FEA
Design standards	ASME 31.3, ASME VIII, PED, ASME IX, AWS D1.1, API 610, ATEX EC-Directive 2014/34/EU
Design pressure rating	51.8 barg @ 38°C
Suction pressure rating	20 barg (standard construction) 40 barg (heav-duty construction)
Temperature rating	-40°C to 370°C
Performance envelope	
Flow Rate	Up to 1500 m ³ /h per pump
Differential Head	Up to 300 m
Speed	Up to 3600 rpm
Maximum pumps	5
Configuration	Open, semi-open and fully-enclosed skid frame designs
Frame Sizes	Up to 8m x 6m x 4m (l x w x h)
Design life	30 years (3 years uninterrupted operation)

API 610 PROCESS PUMP SKID PACKAGES

key features

- Optimised layouts
- Pump piping loads
- Integrated junction boxes and controls
- Smart tagging
- Calculations including structural
- Seismic shock
- Loading and blast



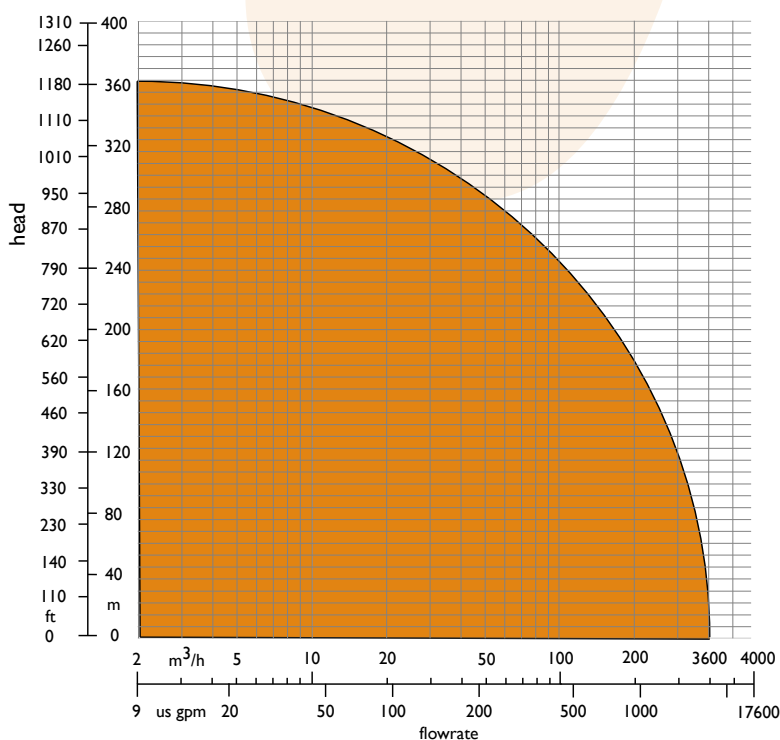
options

Driver	Instrumentation	Integrated Control	Noise Control
Steam turbine	Pressure gauge	Flow	Acoustic hood
Diesel engine	Pressure transmitter	Pressure	Insulation
Gas engine	Pressure differential gauge	Temperature	Baffles
Electric motor inc. VSD options	Pressure differential transmitter	Duty	Enclosed
		Standby	
		Shutdown	

materials

Skid-frame	Pipework	Casing	Impeller
Carbon steel	Carbon steel	Cast iron	Cast iron
Galvanised steel	Galvanised steel	Carbon steel	Carbon steel
Stainless steel	Stainless steel	Stainless steel	Stainless steel
	Duplex stainless steel	Duplex stainless steel	Duplex stainless steel

skid package hydraulic coverage



typical applications

- Water filtration
- Separation
- Sand washing
- Fuel skids
- Glycol dehydration
- Glycol regeneration



Amarinth

Bentwaters Parks, Rendlesham, Woodbridge,
Suffolk IP12 2TW, United Kingdom

tel: +44 (0)1394 462 120

fax: +44 (0)1394 462 130

e-mail: enquiries@amarinth.com

web: www.amarinth.com