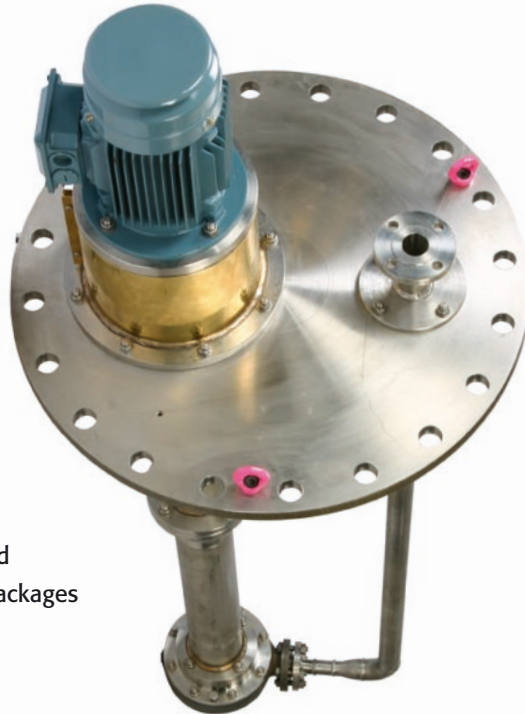


API 610 VS4 SUMP PUMPS



Amarinth V Series pumps are designed to API 610 10th edition specifications for the Petrochemical, Chemical and Oil & Gas markets and are fully ATEX compliant. All API materials are available as standard to match your application, plus bespoke options including NACE compliant materials. Standard Documentation, Testing and NDT packs are offered. Alternatively bespoke packages can be tailored to fit your exact requirements.

General description

A range of vertical long shaft single stage centrifugal end suction sump pumps manufactured in a variety of alloys. Designed to suit customer requirements with lengths available up to 6m sump depth.

Construction

Heavy duty modular design maximising flexibility to suit customer's application.

Design methodology

Advanced computer techniques including 3D modelling, FEA & CFD

Design standards

API 610 10th : 2004
ATEX EC-Directive 94/9/EC

Design pressure rating

20 bar g at 20°C (pressure containing parts)

Operating temperature rating

-40°C to 100°C (standard construction)

Design temperature

150°C

Performance envelope

Flowrate

Up to 500m³/h

Differential head

Up to 200m

Speed

Up to 3600 rpm

Configurations

ANSI mount flange
Rectangular plate

Frame sizes

040x025x145 to 200x150x410

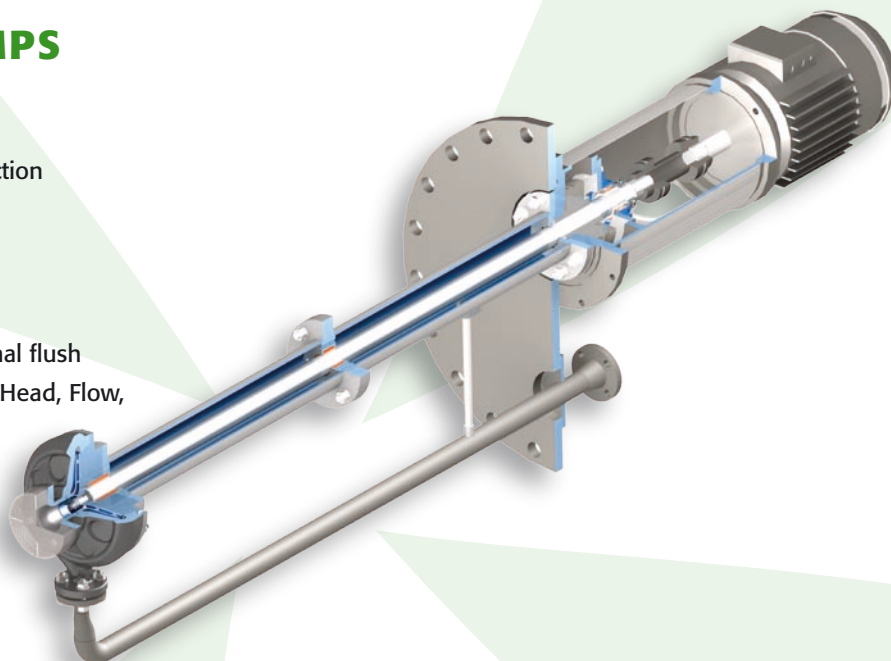
Design life

20 years (3 years uninterrupted operation)

API 610 VS4 SUMP PUMPS

key features

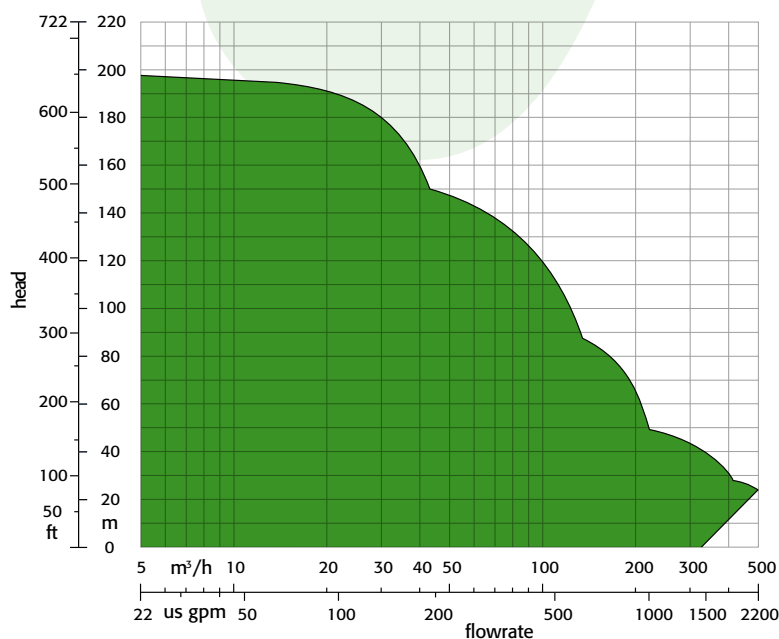
- VS4 vertical long shaft single stage end suction centrifugal pumps
- Pressure containing parts rated to 20 bar
- Full ATEX compliance
- Shrouded or Semi open impellers
- Lubrication options using product or external flush
- Tested to API 610/ISO13709 procedures – Head, Flow, NPSH, Noise & Vibration
- A range of alloys available on request including NACE compliant materials
- -40°C to 100°C temperature applications
- Up to 6m sump depth



materials

Materials	Casing	Impeller
A8 - SS 316 / SS 316	ASTM A744 CF-8M	ASTM A744 CF-8M
I1 - Cast Iron / Cast Iron	ASTM A278 Class30	ASTM A278 Class30
S8 - Carbon Steel / SS 316	ASTM A216 WCB	ASTM A744 CF-8M
S6 - Carbon steel / 12% Cr SS	ASTM A216 WCB	ASTM A217 Gr CA 15
D1 - Duplex SS / Duplex SS	ASTM A890 Gr 1B CD-4MCuN	ASTM A890 Gr 1B CD-4MCuN
D2 - Super Duplex SS / Super Duplex SS	ASTM A890 Gr 5A (UNS J93404)	ASTM A890 Gr 5A (UNS J93404)
Hastelloy B / Hastelloy B	ASTM A949 Gr N-7M	ASTM A949 Gr N-7M
Hastelloy C / Hastelloy C	ASTM A494 GrCW-12MW	ASTM A494 GrCW-12MW
Monel / Monel	ASTM A494 GrM35-1	ASTM A494 GrM35-1
Customer specified	Other alloys available on request including NACE compliant materials	Other alloys available on request including NACE compliant materials

V Series hydraulic coverage



typical applications

- Biocide / rain
- Condensate return
- Flare knock out drum
- MEG 75% with H₂O
- Oily water separator
- Sour water sump
- Storm water
- Utilities
- Wash down sumps



Amarinth

Bentwaters Parks, Rendlesham, Woodbridge,
Suffolk IP12 2TW, United Kingdom

tel: +44 (0)1394 462 120 fax: +44 (0)1394 462 130

e-mail: enquiries@amarinth.com web: www.amarinth.com



026
Certificate number: 3720/03