

Documentation packs			
Documentation pack	Inclusive documents		Standard
Bronze pack	Order acknowledgement (electronic)		●
	Installation, Operating & Maintenance manual		●
	Declaration of conformity		●
	ATEX Declaration of conformity – only if contracted		
	Hydrostatic test certificate		
	Pump HQ performance test certificate		●
	Spare parts list – commissioning		
	Documentation schedule		
	Quality plan		
	Production programme		
Silver Pack (includes bronze pack)	Spare parts list – operating		
	Customer specific pump GA drawing		
	Pump SA & parts list		
	Type 3.1 certificates (* pressure containing + process wetted parts only) – only if contracted		
	Pump HQ performance test curve		
	Certification databook		
	Pump datasheet		
	Motor type test certificate		
	Motor GA drawing		
	Motor datasheet		
Gold pack (includes silver pack)	Motor Declaration of conformity		
	Motor ATEX Declaration of conformity		
	Manufacturing databook		
	Material traceability		
	Progress reports (monthly)		
	Paint certificate		
	Nameplate drawing		
	Spare parts interchangeability report		
	Spare parts list – insurance & commissioning		
	Documentation format	Electronic CD – Adobe (.pdf), ms office (.xls .doc)	
	Hard copy		

NDT			
Pump test	Test standard	Acceptance criteria	Standard
Hydrostatic	API 610	API 610 (1.5 x MAWP)	●
Head & flow	ISO 9906	API 610	●
Mechanical run – 1 hour at rated duty	API 610	API 610	
Mechanical run – 4 hours at rated duty	API 610	API 610	
NPSH – 4 point	ISO 9906	API 610	
Noise – single point at 1m	API 610	Customer datasheet	●
Vibration – FFT spectrum at each test point	API 610	API 610	●
Bearing bracket resonance	API 610	Mutual agreement	

NDE			
Visual examination of cast surfaces	ASMEV Article 9 / MSSSP55 (pressure containing castings only)		●
Dye penetrant of machined surfaces	ASMEV Article 6 and 24 (pressure containing castings only)		
Dye penetrant of cast surfaces	ASMEV Article 6 and 24 (pressure containing castings only)		
Dye penetrant of welds	ASMEV Article 6 and 24 - Drain & seal pipework (if fitted)		
Positive Material Identification	Pressure boundary parts (excludes fasteners)		
Radiography	ASMEV Article 2 and 22 - Welds (pressure pipework)		
	ASMEV Article 2 and 22 - Castings – shot plan (critical areas)		
Hardness report	NACE (compliant material only) MR0175 / ISO 15156		
Various motor tests	IEC 60034		

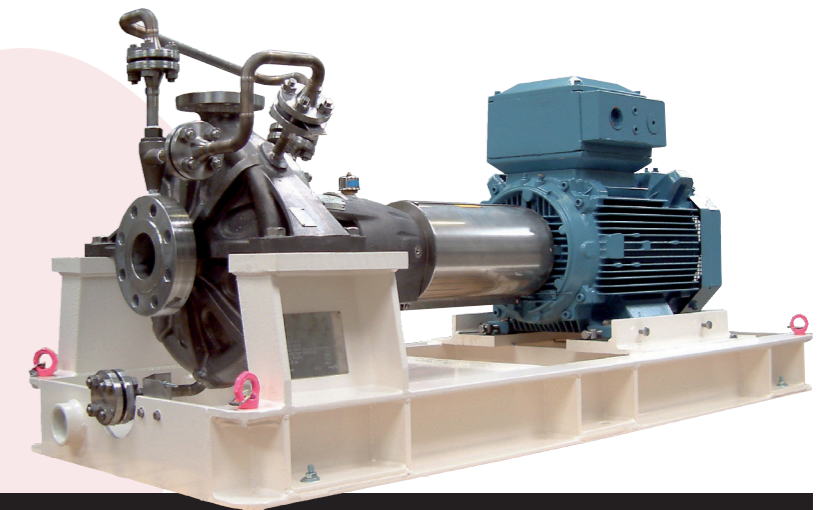
*Pressure containing parts include; volute casing, casing cover, & mechanical seal. Process wetted parts include shaft, impeller, wear rings, impeller hub cap, lockwasher & screw. A full range of documentation can be tailored to suit your exact requirements. Amarinth reserves the right to alter any information within this document without prior notification. © Copyright 2005-2017. Amarinth Limited. E&OE.



A Series – OH2 Petrochemical pumps

(API 610 12th: 2021)

technical specification



General specification		
General description	A range of OH2 single stage, centreline mounted centrifugal end suction pumps with centreline discharge manufactured in a variety of alloys.	
Construction	Backpullout design with metal to metal fits	
Design methodology	Advanced computer techniques including 3D modelling, FEA & CFD	
Design standards	API 610 12th : 2021 ATEX EC-Directive 2014/34/EU / IECEx: ISO 80079-36/7	
Design pressure rating	51.8 bar g @ 38°C	
Suction pressure rating	20 barg (standard construction) 40 barg (heavy duty construction)	
Temperature rating	-40°C to 200°C (standard construction) -40°C to 370°C (with cooling)	
Performance envelope		
Flowrate	Up to 1500 m³/h	
Differential head	Up to 300 m	
Speed	Up to 3600 rpm	
Configurations	Long coupled pump Bare shaft pump Rotating assembly	
Frame sizes	040x025x145 to 300x200x510	
Design life	30 years (3 years uninterrupted operation)	
Material options	Casing	Impeller
A8 SS316L / SS316L	ASTMA351 CF3M (UNS J92800)	ASTMA351 CF3M (UNS J92800)
S8 Carbon steel / SS316L	ASTMA216 WCB (UNS J03002)	ASTMA351 CF3M (UNS J92800)
S6 Carbon steel / 12% Cr SS	ASTMA216 WCB (UNS J03002)	ASTMA217 Gr CA15 (UNS J91150)
D1 Duplex SS / Duplex SS	ASTMA995 Gr 4A (UNS J92205)	ASTMA890 Gr 4A (UNS J92205)
D2 Super Duplex SS / Super Duplex SS	ASTMA995 Gr 6A (UNS J93380)	ASTMA890 Gr 6A (UNS J93380)
Hastelloy B / Hastelloy B	ASTMA494 Gr N 7M (UNS N30007)	ASTMA494 Gr N 7M (UNS N30007)
Hastelloy C / Hastelloy C	ASTMA494 Gr CW 12MW (UNS N30002)	ASTMA494 Gr CW 12MW (UNS N30002)
Monel / Monel	ASTMA494 Gr M35 I (UNS N24135)	ASTMA494 Gr M35 I (UNS N24135)
Titanium / Titanium	ASTMB367 Gr C2 (UNS R52550)	ASTMB367 Gr C2 (UNS R52550)
Customer specified	Other alloys available on request including NACE compliant materials	Other alloys available on request including NACE compliant materials

Features	Technical notes	Benefits	Standard
▼ Casing			
Construction	One piece casting with integral suction cover and 3 mm corrosion allowance	Minimal leakage path, prolonged pump life	●
Flange standard	ASME Class 300 / Class 250		●
Nozzle loading	As defined in API 610	Rugged construction	●
Fasteners	ASTM320 Gr B8MX	Strength & corrosion resistance	●
Gasket	Spiral wound with graphite filler Customer specified	Covers most fluids Matched to application	●
Wear rings	Suction & drive side (shrouded impeller only)	Prolonged pump life	●
Drain	½ / ¾" butt weld flange No drain	Minimal leakage path	●
Jacking screws	SS316	Ease of maintenance	●
▼ Impeller			
Construction	One piece casting	Strength & integrity	●
Vanes	Francis type	Low NPSHr & stable H / Q curve	●
Style	Shrouded Semi open	Optimum efficiency Handles solids content in fluid	●
Fixing	Keyed with retention screw & lock washer	Ease of maintenance	●
Wear rings	Suction & drive side (shrouded only)	Prolonged pump life	●
Hydraulic balancing	Balance hub / holes (shrouded only)		●
Dynamic balancing	ISO 21940-11 G2.5 ISO 21940-11 G1.0	Prolonged pump life Matched to customer requirement	●
▼ Mechanical seal & seal housing			
Shaft diameters	30mm, 40mm, 50mm, 60mm, 70mm		●
Seal type	API 682 single cartridge API 682 double cartridge	Ease of maintenance Reduced emissions	●
Seal plan	Plan 11 / 61 Any other API 682 plan Customer specified	Optimum seal environment Matched to customer requirement	●
Manufacturers	Eagle Burgmann, John Crane or customer specified	Matched to site standard	
▼ Bearing bracket			
Style	One piece casting	Better concentricity, less run out	●
Construction	Heavy duty casting with machined abutments	Superior bearing alignment	●
Bearings	Dual angular contact (axial) plus deep groove ball (radial)	Long life	●
Design bearing life	25,000 hours (L10) @ standard duties		●
Bearing seals	John Crane non contacting isolators Customer specified	Minimal wear, long life Matched to site standard	●
Lubrication	Oil Grease	Higher operating temperatures Cost benefit	●
Cooling	Cast fins Fan Water cooled heat exchanger	Dissipates heat Extended temperature range Constant cooling	●
Running temperature	API compliant	Long life	●

Features	Technical notes	Benefits	Standard
Monitoring	Vibration monitoring points Temperature monitoring points	Assist planned maintenance	●
Bearing bracket material	Carbon steel Stainless steel 316	Matched to application requirement	●
Shaft material	Duplex stainless steel Customer specified	Matched to application	●
▼ Coupling & guard			
Coupling style	Spacer type with metal membranes. DBSE140 / 180	Ease of maintenance	●
Construction	Bored & keywayed with extraction holes Low temperature	Ease of removal Match to environment	●
Balancing	Inherent by design ISO 21940-11 G 2.5	Low vibration Prolonged pump life	●
Manufacturers	John Crane / BIBBY Customer specified	Matched to site standard	●
Standards	ATEX		
Guard	Two piece wrap around in brass	Non sparking	●
▼ Baseplate			
Style	Drain pan with grout holes Drain pan without grout holes	Suit site standard Cost benefit, ease of installation	●
Drain	2" ASME Class 150 flange	Ease of connection	●
Construction	Fabricated from rolled steel sections with 4 lifting eye bolts	Rugged construction	●
Standards	API 610		●
Earthing point	2 off M10 studs / nuts / washers		●
Alignment screws (Up to 132 frame)	Transverse & axial	Matched to customer requirement	
Alignment screws (160 frame and above)	Transverse & axial	Ease of alignment	●
Material	Carbon steel Stainless steel 304L	Cost benefit Resistant to low temperature	●
▼ Driver			
Motor type	Safe Area, Ex ec, Ex eb, Ex db, Ex db	Matched to area requirements	
Standards	ISO frames NEMA frames ATEX / IECEx	Matched to site standard Hazardous area requirement	●
Supply	380 – 440 / 3 / 50, 440 – 460 / 3 / 60	Matched to site standard	
Manufacturers	WEG, ABB or customer specified	Matched to site standard	
▼ Paint			
Refinery specification	3 coat system (Min DFT 225µm) – RAL7030 (grey)		●
Offshore specification	4 coat system (Min DFT 300µm) – RAL7030 (grey) Customer specification	Matched to site standard	
▼ Packing			
Flange blanking	Metal closures with rubber gaskets		●
Road	Palletised & cling wrap		●
Seafreight/ airfreight	Wooden box paper lined Wooden box with vacuum sealed bag	Long term storage Moisture free	