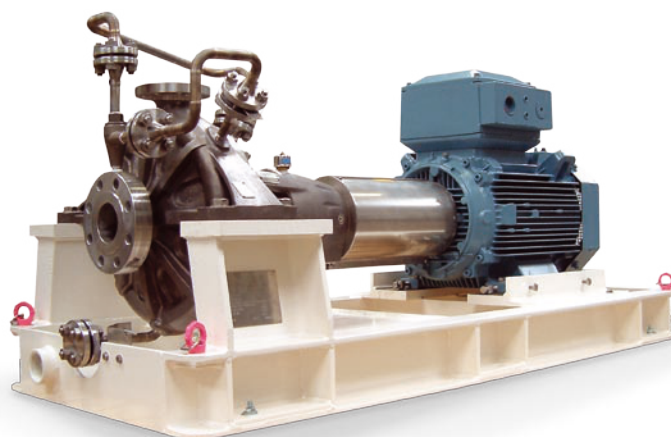


API 610 OH2 PROCESS PUMPS

Amarinth A Series pumps are designed to API 610 latest edition specifications for the Petrochemical, Chemical and Oil & Gas markets and are fully UKEx, ATEX, EACEx, ISO 80079-36 compliant when requested. All API materials are available as standard to match your application, plus bespoke options including NACE compliant materials. Standard documentation, testing and NDT packs are offered. Alternatively bespoke packages can be tailored to fit your exact requirements.



General description

A range of OH2 single stage, centreline mounted centrifugal end suction pumps with centreline discharge manufactured in a variety of alloys

Construction

Back pullout design with metal to metal fits

Design methodology

Advanced computer techniques, 3D modelling, FEA & CFD

Design standards

API 610 / ISO 13709 latest editions
ATEX EC-Directive 2014/34/EU

Design pressure rating

51.8 bar g @ 20°C

Suction pressure rating

20 bar g (standard construction) 40
bar g (heavy duty construction)

Temperature rating

-40°C to 200°C (standard construction) -
40°C to 380°C (with cooling)

Performance envelope

Flowrate

Up to 1700 m³/h

Differential head

Up to 225m

Speed

Up to 3600 rpm

Configurations

Long coupled pump
Bare shaft pump
Rotating assembly

Frame sizes

040x025x145 to 250x200x630

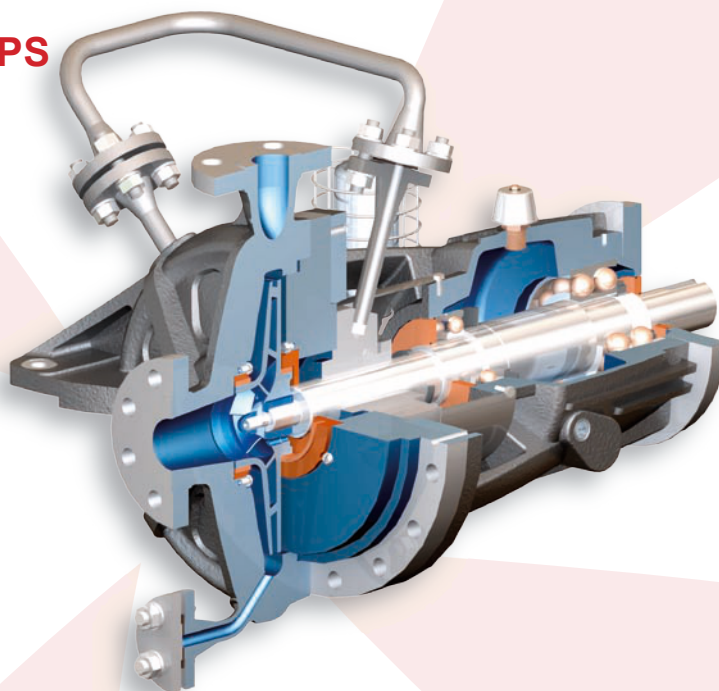
Design life

20 years (3 years uninterrupted operation)

API 610 OH2 PROCESS PUMPS

key features

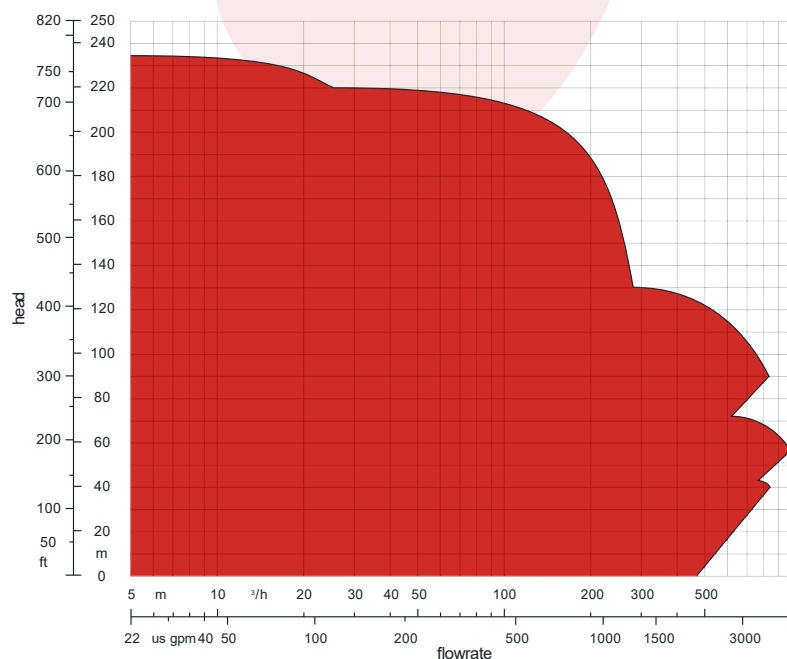
- OH2 single stage centreline mounted centrifugal pumps
- 51 bar pumps to API 610 (latest edition) and ATEX compliant
- -40°C to 380°C temperature applications
- Shrouded or Semi-Open Impellers
- A range of alloys available on request including NACE compliant materials
- Tested to API610 / ISO13709 procedures – Head, Flow, NPSH, Noise & vibration
- A range of API 682 Seals & systems (PED compliant)
- Grouted and Non-Grouted Baseplates to API 610 dimensions



materials

Materials	Casing	Impeller
A8 - SS 316 / SS 316	ASTM A744 CF-8M	ASTM A744 CF-8M
i1 - Cast iron / Cast iron	ASTM A278 Class30	ASTM A278 Class30
S8 - Carbon Steel / SS 316	ASTM A216 WCB	ASTM A744 CF-8M
S6 - Carbon steel / 12% Cr SS	ASTM A216 WCB	ASTM A217 Gr CA 15
D1 - Duplex SS / Duplex SS	ASTM A890 Gr 1B CD-4MCuN	ASTM A890 Gr 1B CD-4MCuN
D2 - Super Duplex SS / Super Duplex SS	ASTM A890 Gr 5A (UNS J93404)	ASTM A890 Gr 5A (UNS J93404)
Hastelloy B / Hastelloy B	ASTM A949 Gr N-7M	ASTM A949 Gr N-7M
Hastelloy C / Hastelloy C	ASTM A494 GrCW-12MW	ASTM A494 GrCW-12MW
Monel / Monel	ASTM A494 GrM35-1	ASTM A494 GrM35-1
Customer specified	Other alloys available on request including NACE compliant materials	Other alloys available on request including NACE compliant materials

A Series hydraulic coverage



typical applications

- Amine
- Boiler feed
- Booster pump duties
- Caustic transfer
- Export
- Fuel transfer
- Low NPSH capabilities
- LPG
- Potable water
- Produced water
- Refinery process
- Seawater duties



Bentwaters Parks, Rendlesham, Woodbridge,
Suffolk IP12 2TW. United Kingdom
tel: +44 (0)1394 462 120 fax: +44 (0)1394 462 130
e-mail: enquiries@amarinth.com web: www.amarinth.com



026
Certificate number: 3720/03